

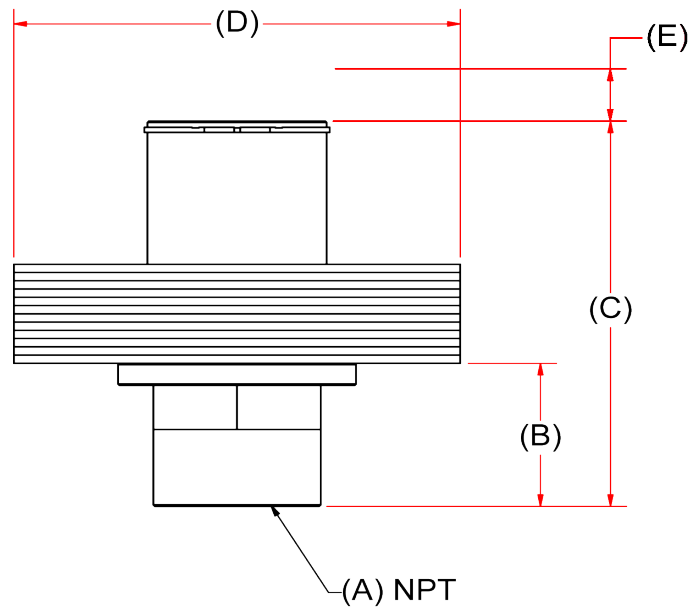
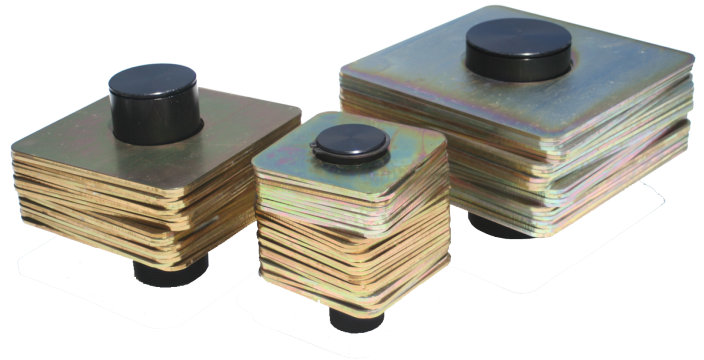
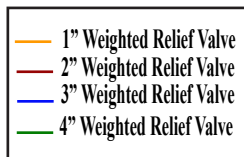
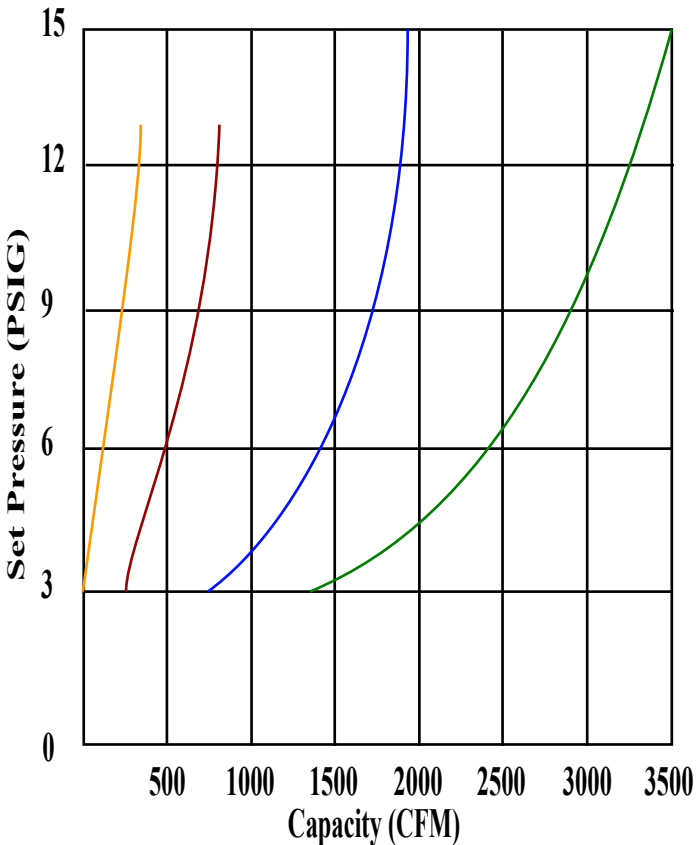


Republic Blower Systems Weighted Relief Valves

REPUBLIC
Blower Systems®

The Republic Weighted Relief Valve is constructed of hard anodized aluminum and is designed to protect blowers from overheating in a blocked-off mode during pressure operation. Each valve has available either 0.5 PSI incremental weights or 1.0 PSI increment weights. To adjust, remove snap ring, then add or remove weight plates.

These valves are available in 1", 2", 3", and 4" and have standard NPT connections, requiring care-free operation and minimal maintenance.



	1"	1.5"	2"	3"	4"
A	1"	1.5"	2"	3"	4"
B	2.25	2.25	2.25	3.25	3.25
C	7.75	7.75	7.75	8.75	9.25
D*	8.07	6.00	8.50	12.75	16.50
E**	8.80	8.80	9.25	10.00	11.00
Part No.	210-3085	210-3086	210-3068	210-3069	210-3070

*0.5 PSIG Increment weights diagonal dimension

**Dimension when valve is fully open

5131 Cash Road ▲ Dallas, TX 75247 ▲ P 214.631.8070 ▲ F 214.631.3673 ▲ 800.847.0380

www.republicsales.com

©Republic Blower Systems®
Modified 02.12

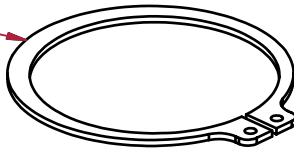


Republic Blower Systems Weighted Relief Valves

R E P U B L I C
Blower Systems®

Weighted Relief Valve Installation and Operation

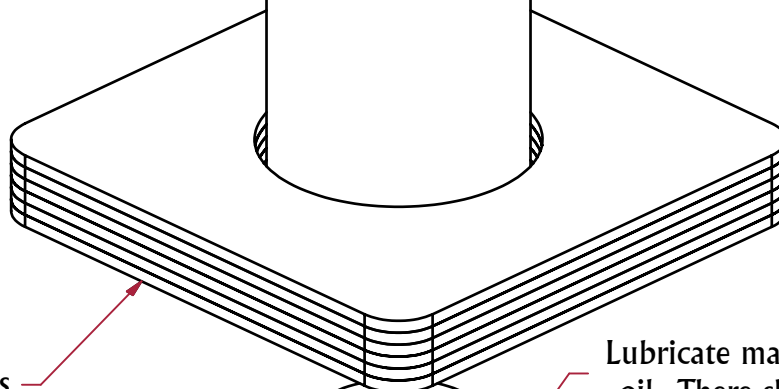
Remove Snap Ring to Adjust
Incremental Weight Plates



Mount Valve in Vertical Position

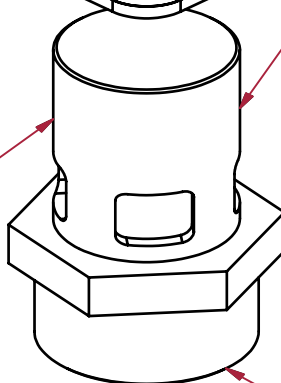


Weight Plates



Lubricate mating surface with 30-weight
oil. There should be a light film of oil
on the plunger at all times.

Plunger



Use Teflon Tape on all Threads
(Hand Tighten to prevent deformation or
galling of the aluminum threads.)

Do Not over tighten!